

FAQs MGNREGA

Meghalaya Society for Social Audit & Transparency

(MSSAT)

Khasi

**FREQUENTLY ASKED QUESTIONS ON
IMPLEMENTATION OF MGNREGA**

**MAHATMA GANDHI NATIONAL RURAL
EMPLOYMENT GAURANTY ACT**

**Ki jingkylli bakongsan halor ka
Mahatma Gandhi National Rural Employment Guarantee Act**

KA JINGPYNRUNG KYRTENG IA KI LONGIING

1. Mano ba lah ban pynrung kyrteng hapoh ka MGNREGS?
 - Ki dkhot jong kano kano ka longiing kiba don ha shnong, kiba la kynjoh ia ka 18 snem shaneng bad kiba don ka mon ban trei bylla sngi, ki lah ban pynrung kyrteng hapoh ka MGNREGS.
2. Hato u/ka briew bym dei u/ka trai shnong ne trai Jylla ki lah ban pynrung kyrteng ha ki Job Card?
 - Em
3. Ki dei ban pynrung kyrteng hano?
 - Ha u Secretary jong ka Village Employment Council (VEC).
4. Yn jia aiu hadien ba la dep pynrung kyrteng?
 - U Secretary jong ka Village Employment Council yn phah ia ka dorkhas jong ki sha u Programme Officer. Ia ka JOB CARD yn ai hapoh 15 sngi na ka sngi ba buh ia ka dorkhas, hadien ka jingbishar bniah.
5. Uei u Programme Officer (PO) hapoh ka MGNREGS?
 - U Block Development Officer (BDO) jong ka Block u dei u Programme Officer (PO).
6. Kaei phi lah ban leh hadien ba ioh ia ka JOB CARD?
 - Ki dkhot jong ka longiing ba la ioh Job Card ki lah ban dawa kam hapoh ka MGNREGS.
7. Hato dei ban don Job Card ban ioh pan kam hapoh ka MGNREGS?
 - Hooiid. Ka Job Card ka dei kaba la ithuh da ka aiñ bad ka treikam na ka bynta 5 snem, kaba ailad ruh ia kano kano ka longiing kaba la pynrung kyrteng ban dawa kam hapoh ka MGNREGS. Ka Job Card ka dei ban don ruh ia ka dur ba shon lang baroh ki dkhot jong ka longiing bad ki kyrteng jong baroh kiba la kynjoh sha ka 18 snem shaneng, kiba kloii ban trei kam bylla hapoh ka MGNREGS. Ia ka Job Card bad ka dur ym donkam ban siew.
8. Hato yn ai Job Card ia iwei pa iwei i dkhot jong ka iing?
 - Em. Kawei ka longiing kan ioh tang kawei ka Job Card. Kano kano ka longiing kam lah ban tam ia ka 100 sngi ka jing bylla ha ka shi snem.
9. Hato lah ban pyntrei ia kiba ym pat dap 18 snem?
 - Em.
10. Mano ba dei ban bat ia ka Job Card?

- Ia ki Job Card ki dei ban bat da ki trai longiing.
11. Lada pynjah ia ka Job Card dang lah ne em ban trei hapoh ka MGNREGS?
 - Hooiid. Lada pynjah ia ka Job Card phi dei ban pyntip mar mar sha u Secretary jong ka VEC jong phi.
 12. Hato lah ban shim kylliang ne die ia ka Job Card?
 - Em
 13. Yn jia aiu lada phi ai kylliang ia ki Job Card sha kiwei?
 - Ki briew ki bym pat pynrung kyrteng kim lah ban trei ne ban ioh jingsiew. Lada ai kylliang ia ka Job Card sha kita ki briew kiba shim kin trei haka kyrteng jong kita kiba dei trai bad ka jingsiew ruh kin ioh ma ki, kaba long beaiñ.

KA DORKHAS NA KA BYNTA KA KAM BYLLA

1. Ka mut aiu ban ong 'ban ai kam lada don ka jingdawa'?
 - 'Ka jingdawa kam' ka mut ba ki briew ki dei ban wan sha khmat ban pan kam bylla. Ka ain MGNREGA ka sdang ban treikam da ka jingbuh ia ka dorkhas ban dawa kam.
2. Kumno ki lah ban dawa kam?
 - Ki briew kiba la kot ia ka 18 snem shaneng ki lah ban buh ia la ka jingdawa kam da kaba buh ia ka dorkhas ha u Secretary VEC/AEC lane ha U Programme Officer. Ha ka dorkhas dei ban batai shai katno sngi ba ki kwah kam. Dei ban ioh ia ka risit ynda la buh ia ka dorkhas.
3. Lano lah ban ioh kam?
 - Hapoh 15 sngi ba buh ia ka dorkhas dawa kam, lah ban ai kam bylla ia u/ka nongdawa kam.
4. Yn jia aiu lada ym ioh kam wat lada la buh dorkhas da ki briew kiba donhok ban ioh?
 - Kiba buh ia ka dorkhas dawa kam, lada kim ioh kam ki dei ban ioh ia ka pisa bym ioh bylla ne ka UNEMPLOYMENT ALLOWANCE.
5. Kaei ka Unemployment Allowance?
 - Ka Unemployment allowance ka dei ka pisa kaba siew ia ki nongpan kam bylla kiba ym shym ioh kam bylla hapoh ka 15 sngi ba ki dawa ia ka.
 - Ka dor jong ka Unemployment Allowance ka long 25% ne $\frac{1}{4}$ na ka dor sngi ba la buh ha ki 30 sngi ba ha shuwa bad 50% ne $\frac{1}{2}$ na ka dor sngi ha ki sngi ba dang sah, katkum ki sngi bylla ba ka longiing ka dang dei hok ban ioh.
6. Yn jia aiu lada ki briew kim wan ban trei?
 - Lada ki briew kim wan ban trei hapoh 15 sngi ba la pynbna, kim donhok shuh ban dawa ia ka Unemployment Allowance.
7. Hato ki lah ban pan kam biang?
 - Hooiid

8. Hato lah ban ai dorkhas na ka bynta shimet?

- Hoooid, tangba tad haduh ba kata longiing jong ki kam pat kot sha ka 100 sngi ka bylla.

KI HOK JONG KI NONGTREI BYLLA SNGI

1. Katno sngi ha ka shi snem lah ban ioh bylla?

- Kawei ka longiing ka lah ban ioh 100 sngi bylla ha ka shi snem

2. Kiei ki tiar bad ki jingdonkam kiba dei ban don ha ki jaka trei?

- Ka umdih kaba khuid bad kaba bha.
- Jaka ban buh ia ki khyllung
- Jaka kiba dum ban kah sngi ne slap
- Ki dawai khnang ban lah ban ai jingsumar na ka bynta ki jingmong kiba malu mala.

3. Haei lah ban ai kam?

- Ia ki kam dei ban long hapoh 5 km na ka jaka sah jong ki nongpan bylla.

4. Lada ka jaka trei ka jngai palat ia ka 5 km na ka iingsah yn jia aiu?

- Ha kum kita ki khep, ia ki nongtrei bylla yn ai tam noh 10% nalor ka bai bylla ba ki dei ban ioh kum ka bai kali.

5. Kiei ki jingiarap na ka bynta ki nongtrei bylla?

- **Lada don ki jingmysaw:** Lada ki nongbylla ki ngat ha kano kano ka jingmysaw bad ki donkam jingsumar kaba kyrkieh, ki dei ban ioh jingsumar ei
- **Lada hap ban sumar ha aspatal:** Lada ki nongbylla ki ngat ha kano kano ka jingmysaw kaba donkam ban pynsah ia ki ha aspatal, ki nongbylla kin ioh jingsumar ei nalor ka jingiohei ia ki dawai bad ka bai sah aspatal. Kita kiba mysaw kin ioh ruh 50% na ka dor sngi ba la mang kum ka bai bylla katba ki dang don ha ka jingsumar.
- **Lada don kiba khlad ne long anna ha ka dkhot met:** Lada don kiba khlad ne kiba kylla anna ha ka por ba trei ha ka MGNREGS, ka Sorkar Jylla kan siew T. 25,000/- lane katkum ka jingbthah jong ka Sorkar kmie, sha ki longiing jong kita kiba khlad ne sha kita kiba anna, katkum kaba dei hok.

6. Katno ka dor bai bylla sngi?

- Ka dor bylla kaba rit eh kaba ki nongbylla sngi ki dei ban ioh kan iaryngkat bad ka dor ba la buh na ka bynta ki nongtrei bylla sngi (unskilled) da ka Sorkar Jylla kumba la pynbna da ka tnat Labour Department ne da ka tnat pynroi nongkyndong (Ministry of Rural Development) jong ka Sorkar Kmie. Ka dor bylla na ka bynta ka snem 2015 -16 ba la pynbeit da ka Sorkar Kmie ka long 163 (shispah hynriewphew lai tyngka) shi sngi.

7. Lano hap siew ia ka bai bylla?

- Ia ka bai bylla hap siew la kumno kumno shi sien shi taiew lane hapoh ar taiew ba la pyndep ia ki kam.

8. Yn jia aiu lada pynslem ban siew ia ka bai bylla?

- Katkum ka Schedule II, Rule 30 jong ka aiñ MGNREGA, ki nongtrei ki dei hok ban ioh ia ka compensation lada pynslem ban ai ia ka bai bylla katkum ki kyndon jong ka aiñ Payment of Wages Act (POWA), kaba ym dei ban palat ia ka T. 3000 bad ym duna ia ka T. 1500, kaba dei ban siew da ka Sorkar Jylla.

KA JINGSAIN DUR BAD KA JINGTREI IA KI KAM

1. Iano la ai ka jingkitkhlieh ban jied ia ki kam?

- Ka Section 16 jong Mahatma Gandhi NREGA ka pynkhamti ia ki AEC/VEC ban jeid bad sain dur ia ki kam kiba yn pyntrei da ka MGNREGS. Man kawei pa kawei ka VEC/AEC ka dei ban shna ia ka Annual Development Plan da kaba jied ia ki kam kiba ki lah ban trei ha uno uno u snem bad ban pynbiang lypa ia ki thup jingtrei da ka jingiarai bad jingpyrkhat lang jong ki nongshong shnong kiba don Job Card. Ia ka rai jong ka VEC, kaba ai jingmut ia ki kam ba ki kwah ban pyntrei hapoh shnong, ki dei ban phah sha u Programme Officer (Block).

2. Ki jait kam aiu lah ban ai?

- Kino kino ki kam kiba neh slem kiba don ka jingmyntoi na ka bynta ka shnong bad kiba kyntiew ia ka ioh ka kot jong ki longiing kiba duk, lah ban ai ban pyntrei. Ki thong jong ka MGNREGA ki long ka jingpyntrei ia ki kam kiba neh bad ha kajuh ka por kiban ai kam ai jam ia ki briew baduk.

3. Hato don ki kyndon kiba ym bit ban pynkheñ hapoh ka MGNREGS?

- Hoodid, ki don ki kyndon kiba ym lah ban pynkheñ da lei lei hapoh ka MGNREGS:

Ka aiñ 1: Ym lah ban pyndonkam KONTRAKTOR ne ai wai sha ki riew shimet.

Ka aiñ 2: Dei ban pynmang ka bhah 60:40 na ka bynta ka bai bylla bad ka bai tiar. Ka bhah na ka bynta ka bai tiar, kam dei ban tam ia ka 40% na ka dor ba la pynmang ia kano kano ka kam.

Ka aiñ 3: Dei ban siew katjuh ka bai bylla na ka bynta ki kynthei bad shynrang.

4. Kiei ki kam ba lah ban pyntrei lyngba ka MGNREGS?

i. Ki kam kiba lah ban pyntrei hapoh ka MGNREGS kat kum jing pynbeit ki long kumne harum; Ka jingiada ia ki um na ki jingpynsniew bad ban lum ia ki, kaba kynthup ia ki nur, ki bun, ki mawkyndroh, ki dam ba shna da ka khyndew bad jaka ban da ia ki umpohlieh. ;

ii. Ka jingiada na ka jingtyrkhong kaba kynthup ia ka jingiada na ka jing pom kulmar ia ki dieng bad ka jing thung dieng;

iii. Ki nur ai um kiba kynthup ia ki nur ba rit bad ba heh ban ai um;

iv. Ka jingpynkhreh ia ki tiar ban ai um, ka jaka ban rep bad ka jingpynroi/jingpynsan ia ka jaka ba long trai da ki longing ba hap hapoh SC/ST, ki briew ba ioh jingiarap na ka land reform, ki briew ba ioh jingiarap na ka IAY bad ha ka jaka jong ki BPL;

- v. Ka jing pynbha ia ki tyllong um ba lah don lypa kaba khynthup ruh ia ka jingpynkhuid ia ki ;
- vi. Ka jingkyntiew/jingpynbha ia ki jaka shnong;
- vii. Ka jingkhanglad ia ka jingshlei um bad ka jingiada na ka jingshlei um kaba kynthup ia ki nala ha ki jaka ba lang um, ka jingpyntih jylliew bad ban pynbha ia ki nur, ka jingshna ia ki nala ban iada na ka eriong ha ki jaka ba don harud duriaw;
- viii. Ki surok ban ai jingiarap ha kano kano ka por, kynthup ia ki muri khilon bad ia ki surok shnong lada donkam ;
- ix. Shna ia ka iing Bharat Nirman Rajiv Gandhi Sewa Kendra kum ka jaka ai jingiarap ha ka Block bad ka Gram Panchayat Bhawan ha ka AEC.
- x. Ki kam ba iadei bad ka rep ka riang kum ka sboh jong ka NADEP, ka sboh wieh bad ka sboh jhur.
- xi. Ka kam ri jingri kum ka jaka ri syiar, ka jaka ri blang, ja ka jingshna ia ki madan khyndew bad ki jaka ai bam ia ki jingri..
- xii. Ki kam ri dohkha ha ka jaka jong ki paidbah.
- xiii. Ki kam ha ki jaka ba harud duriaw kum ki jaka ban thad doh;
- xiv. Ki kam ban pynbiang umdih ha ki ri kyndong.
- xv. Ki kam ba iadei naka bynta ka jingkoit ka jingkhiah kum ki nala na ka bynta ka longing, ki painkhana ha ki skul, ki painkhana ha ki angawandi centre bad ki nala ban jingpyniaid ia ki jaboh;
- xvi. Kino kino ki kam ban sa pynbna da ka sorkar kmie ha ka jingiasyllok lang bad ka sorkar jylla.

(Baroh ki kam ba lah kdew ha u (iv), (x),(xi), (xiii),(xiv) and (xv) yn shah ha ki jaka ba long trai da ki longing ba hap hapoh ka SC/ST/BPL/ ki ba ioh jingiarap na ka IAY/ ki nongrep bad ki briew ba dang sah sha khlaw.)

- 5. Hato ngi lah ne em ban trei haduh lai tylli ki jait jingtrei ne project ha ka shi snem?
 - Hood, tangba dei ban don ruh ki briew kiba dawa ban trei bylla. La pynshlur ia ki shnong ba ki dei ban pyndep ia kawei ka kam ha shuwa ba kin sdang kaba thymmai.
- 6. Lada ym don ki jaka ba longtrai da ki paidbah ne shnong lah mo ban trei ha ki jaka jong ki trai shimet?
 - Hood, tangba lah ban trei tang ha ki jaka kiba long trai da ki briew kiba hap ha ka thup jong ka SC/ST / BPL/ IAY.

7. Hato lah ban shna surok kiba yn pyniasoh ia ka shnong bad ka tlong um kaba don habar jong kita ki shnong?
- Hoodid, tangba ki shnong kiba marjan kim dei ban pyntrei ia kajuh ka kam ne surok kaba leit sha kata ka tlong um. Lada don ka jingiatyngkhuh jong ki jingtrei bad ki shnong kiba marjan, dei ban kynjoh ktien shuwa sha u Programme Officer.

KA JINGPYNBEIT IA KI RUKOM PYNIAIDKAM

1. Kiei ki rukom pyniaid kam ba la buh kyrpang na ka bynta ka MGNREGS ha Meghalaya?
 - Na ka jingbymdon ka Panchayati Raj System ha Meghalaya, ka Sorkar Jylla ka la thaw thymmai saw kyrdan treikam khnang ba yn lah ban pyniaid ia ka MGNREGS ha Meghalaya, kita ki long:
 - i) Village Employment Council (VEC) ha ka kyrdan jong ka shnong.
 - ii) Area Employment Council (AEC) ha ka kyrdan kaba kynthup ia katto katne tylli
ki shnong kiba ia don ka jingjngai kaba hapoh 2.5 km iwei na iwei pat
 - iii) Block Employment Council (BEC) kaba thaw ha ka kyrdan jong ka Block.
 - iv) District Employment Council (DEC) kaba thaw ha ka kyrdan jong ka District
2. Ki brierw kiba kumno kiba lah ban long kum ki dkhot jong ka Village Employment Council?
 - Ki shynrang bad kynthei kiba dei ki khlieh jong ka longiing ki lah ban long ki dkhot jong ka Village Employment Council.
3. Yn leh aiu ynda la dep thaw ia ka Village Employment Council?
 - Ki dkhot jong ka Village Employment Council kin thaw ia ka PROGRAMME EXECUTIVE IMPLEMENTATION COMMITTEE (PEIC) ban pyntreikam ia ka skhim.
4. Mano ba thaw ia ka Programme Executive Implementation Committee?
 - Ia ka Programme Executive Implementation Committee (PEIC) la thaw da 5 (san) ngut ki dkhot. Ka VEC kan hap jied pat ia u/ka Chairman bad Secretary bad kiwei ki dkhot pat yn rai da ka General Body meeting jong ka VEC. Iwei i dkhot jong ka PEIC idei ban long na ki longkmie.
5. Mano ban pyniaid ia ki jingialang jong ka VEC?
 - Ia ka jingialang jong ka VEC dei ban pyniaid da u Chairman jong ka Programme Executive Implementation Committee/ Rangbah Shnong/nongkitkam Dorbar Shnong ne Secretary ba la jied da ki dkhot VEC.
6. Haduh katno snem dei ban pynneh ia ka PEIC bad AEC?
 - Ki dkhot jong ka PEIC bad AEC ki lah ban trei kam haduh 3 (lai) snem.
7. Kiei ki kamram bad ki jingkitkhlieh jong ka Village Employment Council (VEC)?
 - a. Ha ka shnong, ka Village Employment Council (VEC) ka dei kaba pynkhreh bad ban pyniaid ia ka skhim.

- b. Ban pyntreikam ia ka skhim. (50% na ki kam kiba la pynmang dei ban pyntri da ka Village Employment Council (VEC))
- c. Ban ai jingmut ia ki jait jingtrei kiba donkam ha ka shnong.
- d. Ban pynthikna ba ki komiti kin treikam bha ha shnong, kita- ka Social Audit Committee na ka bynta ban pynlong ia ka Social Audit, ka Vigilance & Monitoring Committee ban peit bniah ia ka rukom pyntreikam ia ka skhim, Purchase Committee na ka bynta ban thied tiar.
- e. Ban buh bha ia ki bui na ka bynta MGNREGS.
- f. Ban pynthikna ia ka jingwan jong ki paidbah sha ki Public Hearing/ Social Audit Forum
- g. Ban phiah ia ki kam ha ka por ba ai bylla hapoh ka MGNREGS.
- h. Ban pynshai paidbah ia baroh ki kot ki sla ne kino kino ki jingpyntip ha kaba ia dei bad ka MGNREGS na ka bynta ban pynlong ia ka Social Audit.
- i. Ban pynthikna ia ka jingdon jong ki tiar, ka um dih, ki tyrpar bad ban peit ba ki paidbah kin ioh ia ka hok jong ki.
- j. Ka jingbuh ia ka Information wall (notis paidbah) ia kaba la thoh ia baroh ki kam ba la pynmang bad ia ka kyrteng jong ki nongtrei bylla.

8. Kaei ka Area Employment Council?

- Ia ka Area Employment Council (AEC) la thaw da kaba kynthup ia katto katne tylli ki shnong kiba ia jngai kumba 2.5 km iwei na iwei. Ia ka AEC la ai ia ki juh ki jingkitkhlieh kumba la ai ia ka Gram Panchayat. Ki dkhot jong ka AEC kin long lai ngut ki dkhot jong ki PEIC kata u Chairman, Secretary bad i dkhot longkmie na baroh ki Village Employment Council (shnong) kiba hapoh kata ka AEC bad ki dkhot baroh kim dei ban palat ia ka 20 ngut.

9. Kiei ki kamram bad ki jingkitkhlieh jong ka AEC?

- a. Ka Area Employment Council (AEC) ka dei ban pynlong ia ka Social Audit. Man ka AEC kan thaw ia ka Social Audit Committee kaba kynthup ia lai ne saw ngut ki dkhot ki ban pynlong ia ka Social Audit na ka bynta ki kam kiba la trei hapoh u pud treikam jong ka, katkum ka jingpynbeit jong u Programme officer lane u District Programme Co-ordinator.
- b. Ban pdiang ia ki dorkhas ban pynrung kyrteng bad ban sam ki Job Card.
- c. Ban kyntiew ia ka bai bylla ha ki Job Card ryngkat ka jingpeit jong ki Gram Sevaks/ Community Co-ordinators.
- d. Ka AEC kan iarap ban pynlong ia ki dorbar ne General Body meeting jong ki VECs ban jied ia ki kam bad ban pynlong ia ki Social Audit Forum na ka bynta u paidbah.
- e. Ki AEC kin phah ia la ki jingai jingmut na ka bynta ki kam ban pyntri (Shelf of projects) da ki VEC sha u Programme Officer.
- f. Ban pdiang ia ki dorkhas jong kiba dawa bylla bad ban kyntiew ia ki ha ki bui ba lah buh kyrpang (Application for Work Register).

10. Kaei ka Block Employment Council (BEC) bad kiei ki kamram jong ka?

- Ka Block Employment Council, kaba dei ka kyrteng thymmai jong ka Block Selection Committee, ba la thaw ha ka kyrdan jong ka Block ia kaba la pynkup ruh ia ki jingkitkhlieh kumba la ai ha ka Block Panchayat.

11. Kiei ki kam jong ka BEC?
 - a. Ka BEC kan pynbiang bad ai jingmynjur ia ka 'block level plan' kaba kynthup ia baroh ki kam kiba yn pyntrei hapoh u pud u sam jong ka Block.
 - b. Ban jied 25 % na ki kam ba la pynmang bad ban pyntrei ia ki da ka jingmynjur bad jingtreilang jong ki VECs.
 - c. Ban trei ia kino kino ki kam kiba la pynkhamti da ka District Employment Council lane ka State Council.

12. Kaei ka District Employment Council (DEC)?
 - Ia ka District Employment Council (DEC) la thaw ha ka kyrdan jong ka District. Ka dei kaba peit ia ka jingpyntrei bad jingpyntrei ia ka skhim. Ka Governing Body jong ka District Rural Development Agency (DRDA) ka dei ka DEC.

13. Kiei ki kamram jong ka DEC?
 - a. Ka DEC ka ai jingmynjur ia ka District Employment Guarantee Scheme Plan, kaba kynthup ia baroh ki Block EGS Plan.
 - b. Ka mynjur ia ki jait kam na kiwei ki tnat treikam jong ka Sorkar nalor ki kam ba la ai jingmut na ki tnat jong ka.
 - c. Ban pyniaid bad khmih bniah ia ka jingpyntrei ia ka skhim.
 - d. Ban bishar bniah ia ki kam ba pyntrei ha ka District bad ki Block.
 - e. Kiwei pat ki kam ba la pynkhamti da ka State Council.

14. Kaei ka Meghalaya State Employment Guarantee Council bad kumno la thaw ia ka?
 - Ia ka Meghalaya State Employment Guarantee Council (MSEGC) la thaw kum ka kynhun ka ban ai jingmut na ka bynta ka jingpynteikam ia ka Mahatma Gandhi National Rural Employment Guarantee Scheme.

KA MEGHALAYA STATE EMPLOYMENT GUARANTEE COUNCIL

CHAIRMAN

(Chief Minister)

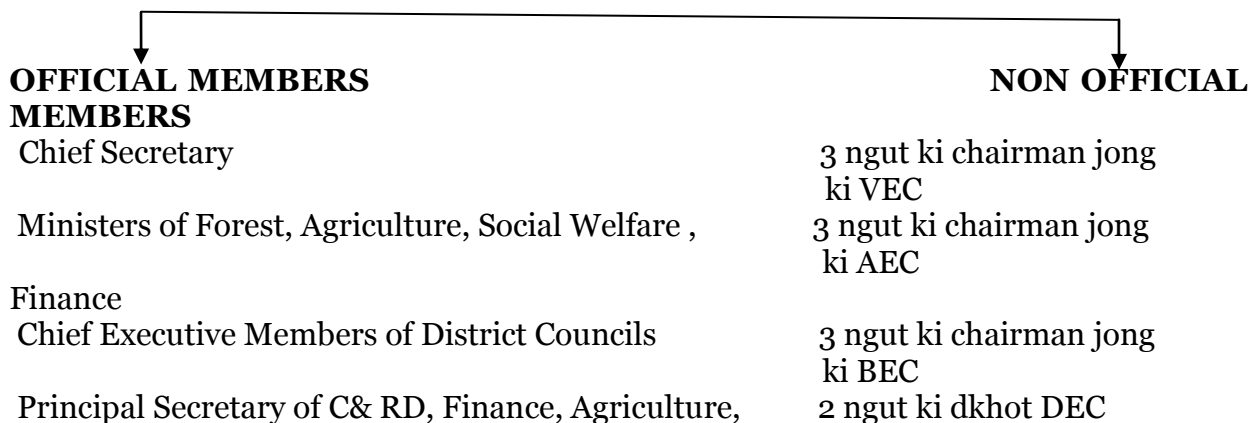
VICE- CHAIRMAN

(Minister Community and Rural Development)

MEMBER SECRETARY

(Commissioner & Secretary, C&RD)

MEMBERS



Soil Conversation, Social Welfare, Forest.

3 ngut na ki seng treimon
sngewbha

Director C& RD

15. Katno sien ka MSEGK kan hap iakynduh?
 - Ka MSEGK ka dei ban iakynduh katkum ki jingdonkam. Hynrei, ka lah ban iakynduh la kumno kumno arsien shi snem.
16. Ka MSEGK ka don haei?
 - Ka MSEGK ka don ha Shillong.
17. Hato ki non official member ki ioh TA/DA lada leit shim bynta ha ka jingialang jong ka MSEGK?
 - Hooiid, ki 'non official member' kiba long ki dkhot na ki VEC, AEC, Sengtreimon sngewbha, ki lah ban ioh ia ka TA/DA kumba la siew ia ki nongtrei Sorkar kiba hap ha ka kyrdan nyngkong.
18. Balei la buh ia ka State Employment Guarantee Fund (SEGF)?
 - Khnang ban lah ban iada na ka jingduna pisa ha ki District, la seng ia SEGF ban ai jingiarap pisa sha ki, katkum ka jingdonkam. Kane ka pisa ka long tang ka jingai kylliang (revolving fund) bad la peit ia kane da ka State Rural Employment Society (SRES).
19. Kiei ki kamram jong ka State Rural Employment Society?
 - La seng ia ka State Rural Employment Society (SRES) ha u snem 2011 ban long kum ka seng ka ban peit ia ka jingpyntreikam jong ka MGNREGS ha ka Jylla. Ka SRES ka khmih ia ki jingpyniaid ia ka skhim ha ka Jylla nalor ka jinpyniaid ia ka SEGF. Ka pynlong ruh ia ki jingpeit bniah bad jingtohkit ia ki kam bapher bapher ba la pyntrei da ka MGNREGS bad ka pynlong ruh ia ki jingai jinghikai na ka bynta ki nongkitkam jong ki VEC /AEC.
20. Ka ophis treikam jong ka State Rural Employment Society ka don haei?
 - Ka don ha Dhankheti, Shillong hajan ka Bawri Mansion, mar pyrshah ka Monfort Building.

CONVERGENCE

1. Kaei ka 'convergence'?
 - Ka 'Convergence' ka mut ka jingpynjan ia artylli kiei kiei.
2. Hato lah ban pyntrei ia kano kano ka kam lyngba ka 'convergence' bad kiwei pat ki skhim?
 - Hooiid, lada kita ki kam ki long kiba la shah da ka MGNREGS bad la shna ia kiei kiei kiba seisoh bad kiba neh ban kyntiew ia ka ioh ka kot. Kita ki kam ki dei ruh ban long katkum ki jingthmu jong ka MGNREGA, kaba mut ba ki dei ban ai bylla bad kim dei ban pyntrei da kaba aiwai sha ki riew shimet.

KA JINGSHAI BAD JINGKITKHLIEH HA KA JINGTREIKAM

1. Kaei ka Social Audit bad Social Audit Forum/ Public Hearing? Hato ki dei ki juh?
 - Ka Social Audit ka dei ka jingpeitngor da ki paidbah ia ka jingpyntrei kam ia ka skhim. Ka Social Audit Forum/Public Hearing ka dei ka jingiakynduh lang ba kyrpang jong ka VEC, ha kaba la pule ia ki jingshem jong ki Social Audit bad la shim ia ki rai bad ki kam ba dei ban leh. Ki Social Audit Forum/ Public Hearing ki long shi bynta jong ka Social Audit.
2. Mano ba thaw ia ka Social Audit Committee bad kiei kiba long dkhot hangta?
 - Ha man ka AEC kan don ia ka Social Audit Committee ban pyniaid ia ka Social Audit na ka bynta ki kam kiba pyntrei hapoh u pud treikam jong ki bad ban pynlong ia ki Social Audit ha ki khep ba la bthah da u Programme Officer bad District Programme Co ordinator bad ia ki report dei ban phah sha u Programme Officer.
 - Ka Social Audit Committee ka dei ban don 3-4 ngut ki dkhot.
3. Hato ki paidbah ki lah ban jurip dalade ia ka jingpyntrei ia ka skhim bad na ka bynta kaei?
 - Ki AEC ki lah ban leh ia ka Social Audit. Ka Social Audit ka mut ka jingjurip bad jingpeit bniah ia ki jingpynlut pynsep bad ruh ia ki jingpyniaid bad jingpyntreikam ia ka skhim. Ka Social Audit ka peit bniah bha ba ki nongtrei bylla ba kin ioh ia la ka hok, lada don ka jingpyniaid ne jingpyntrei bakla ia ka skhim bad ban peit ba ki dei ban poi sha ki ba dei hok ban ioh. Na kine ki daw donkam ban buh ia ka Social Audit Committee ha man ka AEC khnang ban lah ban pyniaid ia ki Social Audit.
4. Kumno lah ban pynsngew ia ka sur u paidbah lyngba ki Social Audit?
 - Ynda la pyndep ia ka Social Audit, ia ki jingshem jong ka dei ban ai sha ka Block. Ynda la pynlong ia ka Social Audit Forum/ Public Hearing dei ban pule ia ki jingshem jong ka Social Audit ha khmat u paidbah. Ki nongkitkam ki dei ban leh eiei mar mar halor jingduna ba la lap da ka Social Audit, hapoh ka por ba la rai da ka 'Public Hearing'.
5. Katno sien dei ban pynlong ia ka Social Audit?
 - Shisien man ka hynriew bnai
6. Ha kano ka rukom ki nongkitkam (nongkitkam VEC, nongtrei ha Block) ki dei ban kitkhlieh ia ka kamram ki jong ki?
 - Ki nongkitkam bad ki nongtrei hapoh ka MGNREGS kin hap ban shim jingkitkhlieh lyngba ka jingpeitngor bad jingjurip ia ka skhim kaba leh da ki bor kiba don hapoh ka shnong, tnat ne kiba na shabar. Ia ka Village level Vigilance bad Monitoring Committee dei ban buh ha man ka AEC ban peitngor ia kawei pa kawei ka kam. Nalor kata, lada pynkhein ia ka ain lah ban shah dain kuna haduh T. 1000. Ka District ka dei ban don ruh ki kyndon bad ki rukom pyniaid kiba buh kyrpang na ka bynta ban peit ia ki jingujor jong ki paidbah (Grievance Redress Mechanism).

7. Donkam mo ban don ka Vigilance & Monitoring Committee (VMC) ha ki shnong? Kiei ki kam jong ka VMC?
 - Hoodid, donkam ban don ka Vigilance & Monitoring Committee (VMC).
Ka kamram ka VMC ka dei ban
 - (a). Leit khmih ha ka jaka ba pyntrei lyngba ka MGNREGS bad iakren ruh bad ki nong bylla.
 - (b). Jurip bniah ia ki kot ki sla bad ki tiar bad ki jingdonkam kiba dei ban don ha jaka trei (kum ki umdih, jaka ban buh ia ki khyllung, tarpar bad dawai ba ai jingsumar na ka bynta jingmong malu mala).
 - (c). Jurip bniah ia ka jingbha bad ka dor jong ki tiar ki tar ba pyndonkam ia ki jingtrei.
 - (d). ban ai ia ka kaiphod yn da lah dep ia ka jingtrei ba thikna bad ruh halor ka jingbha jong ka jingtrei bad ka jingmyntoi jong ka.

8. Kiei ki dkhot jong ka Vigilance & Monitoring Committee (VMC) bad mano ba lah ban long dkhot ha ka VMC?
 - Ia ka Vigilance bad Monitoring Committee la thaw da 10 ngut ki dkhot, shiteng na ki dkhot dei ban kynthup da ki longkmie ryngkat ki nongmih khmat na ki jaitbynriew Schedule Castes bad Schedule Tribes katkum ka jingbun ki jaitbynriew. Ki dkhot ka Vigilance bad Monitoring Committee dei ban ithuh na pdeng ki nonghikai skul shnong, ki nongtrei anganwadi, dkhot ki Self- Help Group, Social Audit volunteers, ki dkhot jong kano kano ka seng bhalang ka shnong, dkhot ki seng samla shnong etc.
 - Dkhot ka Vigilance bad Monitoring Committee dei ban thung/jied da ka VEC na ka bynta ka por ba 6 bnai hynrei kan ym tam ia ka shisnem.

JINGSIEW LYNGBA KI BANK, SMART CARD, CSP, BC BAD KIWEI

1. Kiei ki Bank Business Correspondent Model hapoh ka MGNREGA?
 - Ki Business Correspondent ki dei ki kynhun ba la thung da ki Bank, kiba la biang ki tiar ki tar katkum ki jingdonkam jong ka juk khnang ba kin lah ban kyntiew ia ki jingkhein jingdiah bad ba lah ban pynpoi hok ia ka bai bylla sha ki nongtrei kiba don ha ki shnong. Ka Business Correspondence Model (BC Model) ka dei ka jingtrei jong ki Bank kiba khlem ki tnat ba kyrpang. La leh ia kane ban pyniar ia u pud treikam jong ki Bank khnang ba kin lah ban poi sha ki shnong kiba don ha ki nongkyndong kiba dang duna palat ki Bank, bad ban lah ban wanrah ia ka jingpyniaid hok ia ka pisa sha ki briew kiba dei hok ban ioh.

2. Kiei ki kamram jong ki BC hapoh ka MGNREGA?
 - Ki kamram ba nyngkong eh jong ki BC ki dei ba kin peit ba ka bai bylla ka dei ban poi sha ki briew kiba dei hok ban ioh, hadien ba la pynshisha ia ki. Ki dei ban buh ruh ia ki CSP katkum ka jinglong jong ka jaka bad ka longshnong manshnong ha ka Block/AEC/VEC, ban pynrung kyrteng ia ki briew kiba trei hapoh ka MGNREGS, ban ai ia ki 'biometric smart card' bad ban siew ia ka bai bylla lyngba ki CSP.

3. Kiei ki jingmyntoi jong ka BC Model?

- Lyngba ka BC Model yn ialeh ban pynpoi ia ka bai bylla ha ka por kaba biang katkum ki kyndon ba la buh da ka aiñ. Yn lah ruh ban siew thik katkum ka dor ba dei hok ban ioh bad ban khang lad ia ka jingleh bym hok ne ka jingshim kabu. Ki nongtrei ki lah ruh ban pynlang ia la ka bai bylla khlem da sei lut ia ka pisa kaba ki ioh, ym kumba siew ia ka pisa mar kti. Ki nongtrei kim donkam ruh ban pynlut por ne pisa ban leit sha ki Bank ba sha jngai.

4. Kaei ka 'Electronic Benefit Transfer'?

Ka Electronic Benefit Transfer (EBT) ka long ka rukom siew pisa ne ka jingsiew ia ka bai bylla hapoh MGNREGS ha kaba ki nongtrei bylla ki pyndonkam ia ki 'biometric smart card'. Ia ka bai bylla yn pynrung beit sha ki 'account' jong ki nongtrei bylla; ki nongtrei bylla kin pyndonkam da ki card EBT ban sei ia la ka bai bylla na ki Business Correspondence jong ki bank, kiba iaid sha ki shnong ban pynpoi ia ka bai bylla jong ki briew kiba trei hapoh ka MGNREGS.

5. Kaei ka biometric smart card?

- Ka 'Biometric Smart Card' ka dei ka card kaba yn pyndonkam da ki nongtrei bylla hapoh MGNREGS ban sei pisa. Ka long thik kum ka ATM card tangba hangne hap shon da ki shimpriah kti ban lah ban pynithuh ia ki trai ba pyndonkam ia ka. Hadien ba la pynrung kyrteng, ki nongtrei bylla kin ioh ia ka smart card na ki business correspondent jong ki. Ia ka bai bylla yn siew da kaba pyndonkam ia kine ki smart card.

6. Mano ba lah ban pan ia ka smart card?

- Ki briew kiba trei hapoh ka MGNREGS bad kiba don JOB CARD ki lah ban pan ia ka Smart Card.

7. Hato hap siew na ka bynta ka smart card?

- Em, ia ka smart card la sam ei. Tangba, donkam ia ka dur bad ki jingshon ia ki shimpriah kti kiba yn lum da ki Customer Service Provider (CSP).

8. Kiei ki Customer Service Provider (CSP)?

- Ki Customer Service Provider or CSP ki dei ki briew kiba la thung da ki BC kiba trei na ka bynta jong ka. Ki CSP ki dei ki briew kiba sah hajuh ne marjan shnong kiba don hapoh ki BC, khnang baki paidbah kin suk ban leit iakynduh ia ki ha kano kano ka por.

9. Yn jia aiu lada ka smart card kaba phi ioh ka don jingbakla?

- Lada ka smart card kaba phi ioh ka don jingbakla, dei ban phah pynbeit ha ki Business Correspondence kiba dei peit ia ki bad yn nym shim pisa na ka bynta kita.

10. Yn jia aiu lada kum pynjah ne pynsniew ia ki Smart Card?

- Ki dei ban pyntip sha ki Customer Service Provider (CSP) jong ki, khnang ba ki Business Correspondent (BC) jong ki kin lah ban ai noh da kawei, lyngba ki CSP ha ki dor ba rit.

11. Kaei ka jinglong ba kyrpang jong ki Smart Card?

- Ki trai jong ki Smart Card kin lah ban sei pisa da kaba thep ia ki smart card jong ki hadien ba ki la shon ia ki shimpriah kti jong ki. Ki lah ban sei lut ne tang shiteng na ka pisa ba ki don ha ka account jong ki.

12. Yn ioh rosit ne em hadien ba la sei ia ka pisa?

- Hooïd, yn ioh ar kopi ki rosit; iwei na ka bynta kiba sei pisa bad iwei pat na ka bynta ki CSP khnang ba kin lah ban buh jingkhein.

13. Lah ban plie account khlem da ai pisa lypa ne zero balance/no frill account?

- Hooïd, lah ban plie account khlem da ai pisa lypa.

OFFICE ADDRESS: Additional Secretariat, Room No 316, Shillong-793001, Meghalaya

☐ **0364 – 2223949**

Email: mssatmeg@gmail.com